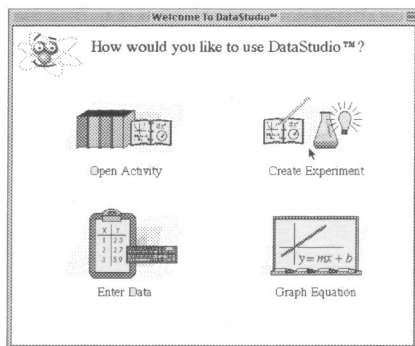
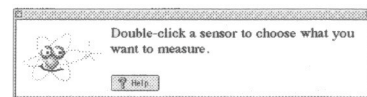


Quick Reference Guide for DataStudio

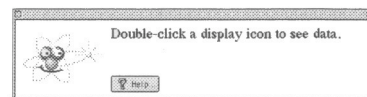
Create an Experiment



(1) Double-click a sensor.



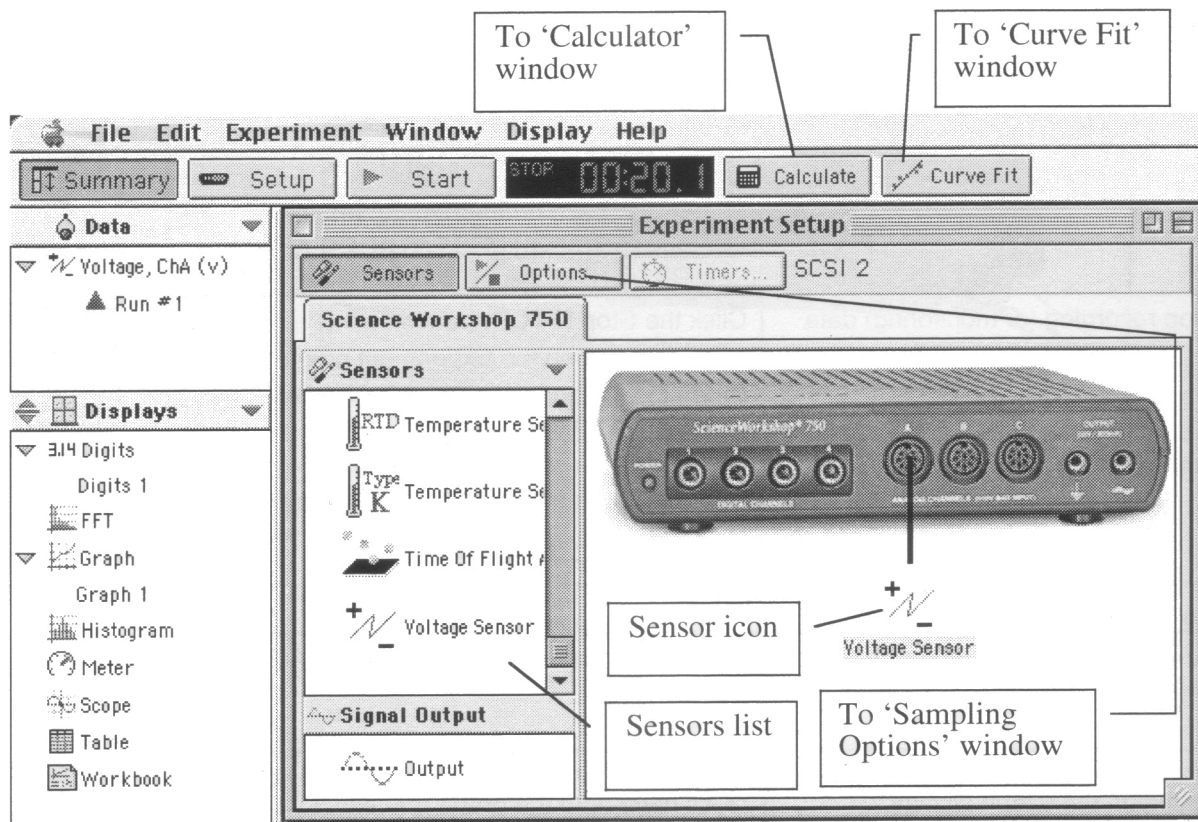
(2) Double-click a display.



What You Want To Do	How You Do It	Button
Start recording data	Click the 'Start' button or select 'Start Data' on the Experiment menu (or on the keyboard press Command R).	
Stop recording (or monitoring) data	Click the 'Stop' button or select 'Stop Data' on the Experiment menu (or on the keyboard press Command -).	
Start monitoring data	Select 'Monitor Data' on the Experiment menu (or on the keyboard press Command M).	none

On the Graph Display	In the Graph Toolbar	Button
Re-scale the data so it fills the Graph display window	Click the 'Scale to Fit' button.	
Pinpoint the x- and y-coordinate values on the Graph display	Click the 'Smart Tool' button. The coordinates appear next to the 'Smart Tool'.	
'Zoom In' or 'Zoom Out'	Click the 'Zoom In' or 'Zoom Out' buttons.	
Magnify a selected portion of the plotted data	Click the 'Zoom Select' button and drag across the data section to be magnified.	
Create a Calculation	Click the 'Calculation' button.	
Add a text note to the Graph	Click the 'Note' button.	
Select from the Statistics menu	Click the 'Statistics' menu button.	
Add or remove a data run	Click the 'Add/Remove Data' menu button.	
Delete something	Click the 'Delete' button.	
Select Graph settings	Click the 'Settings' menu button.	

Experiment Setup Window



Graph Display

