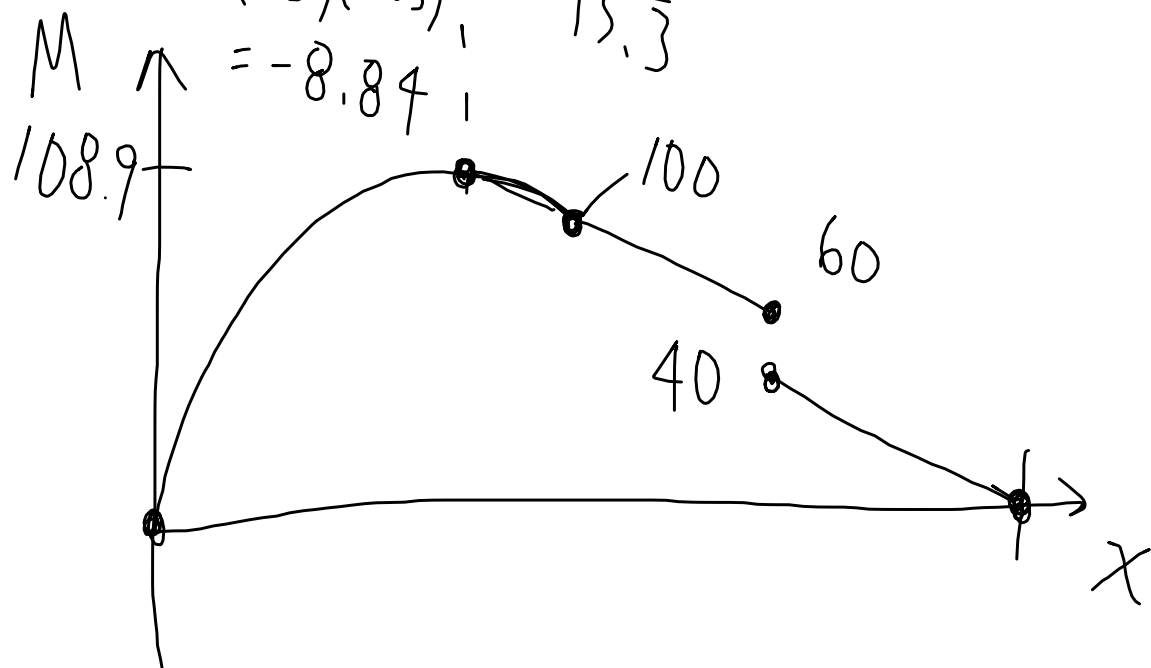
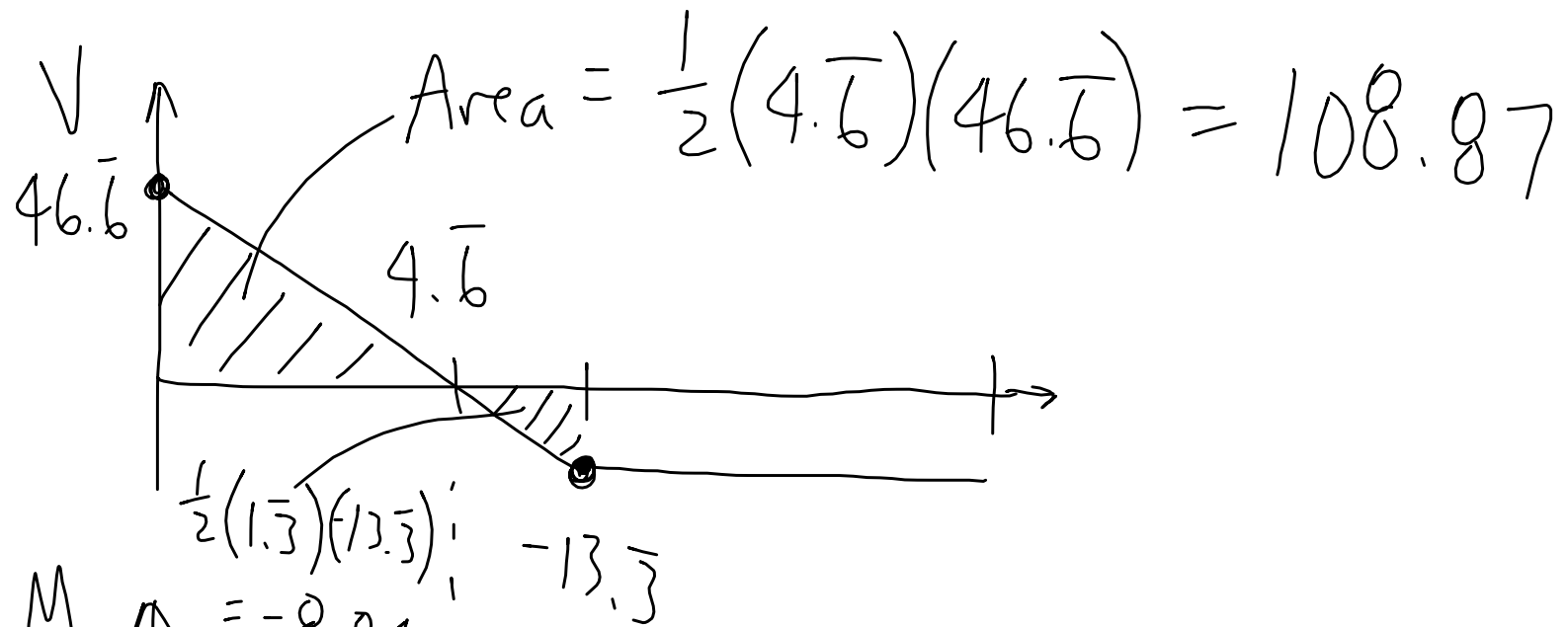
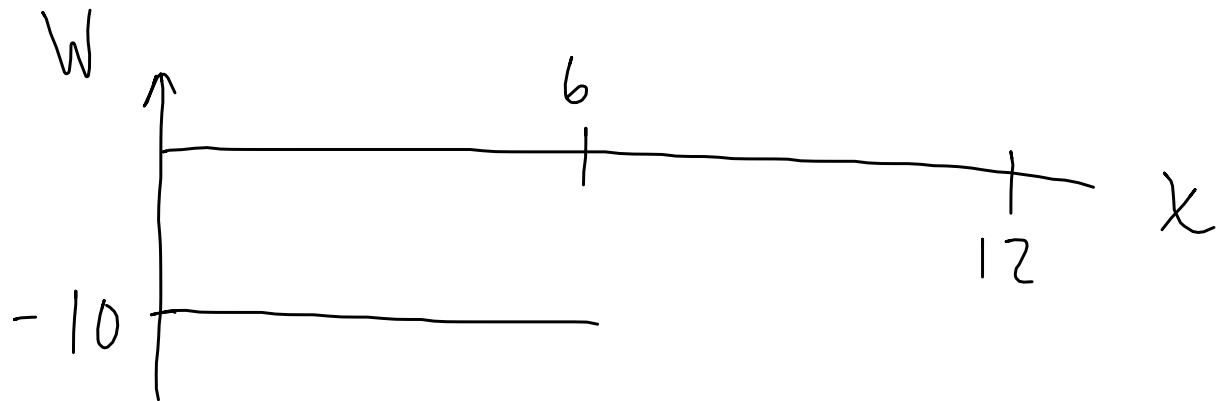
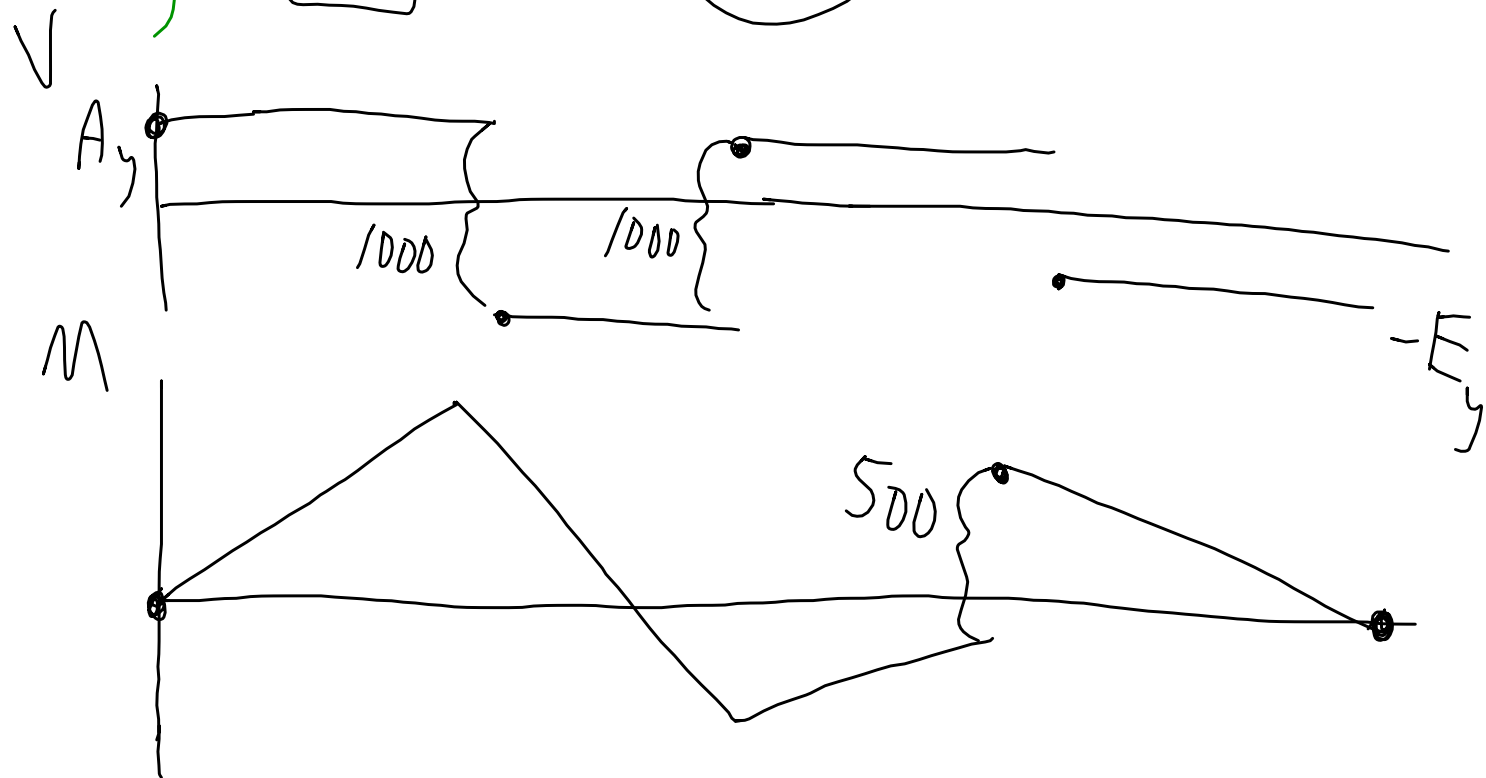
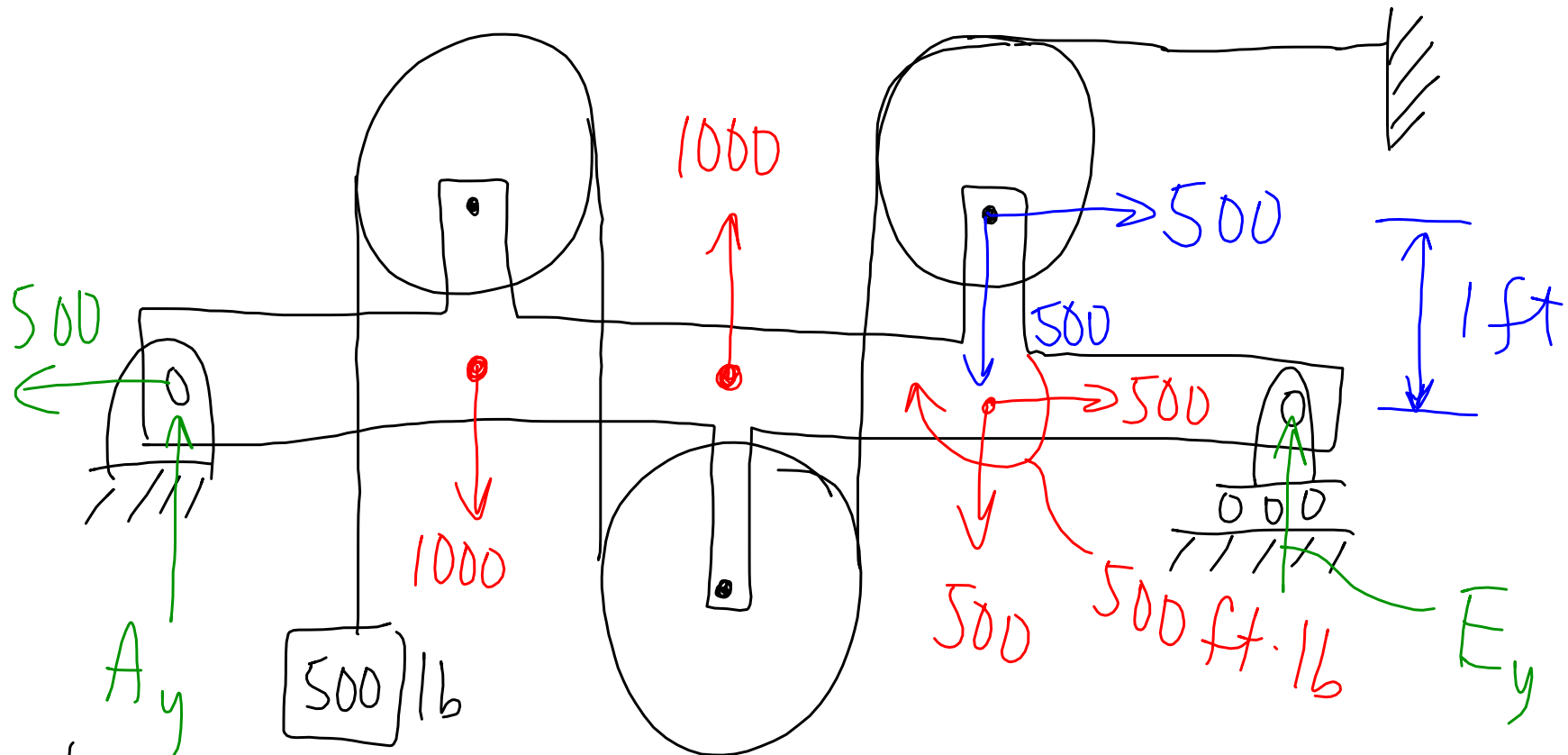


$$+\curvearrowright \sum M_A = 20 + D_y(12) - 60(3) = 0 \quad D_y = 13.\bar{3} \text{ lbs}$$

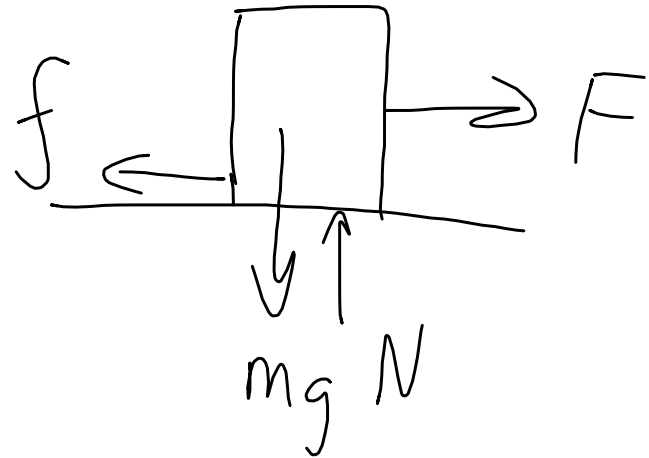
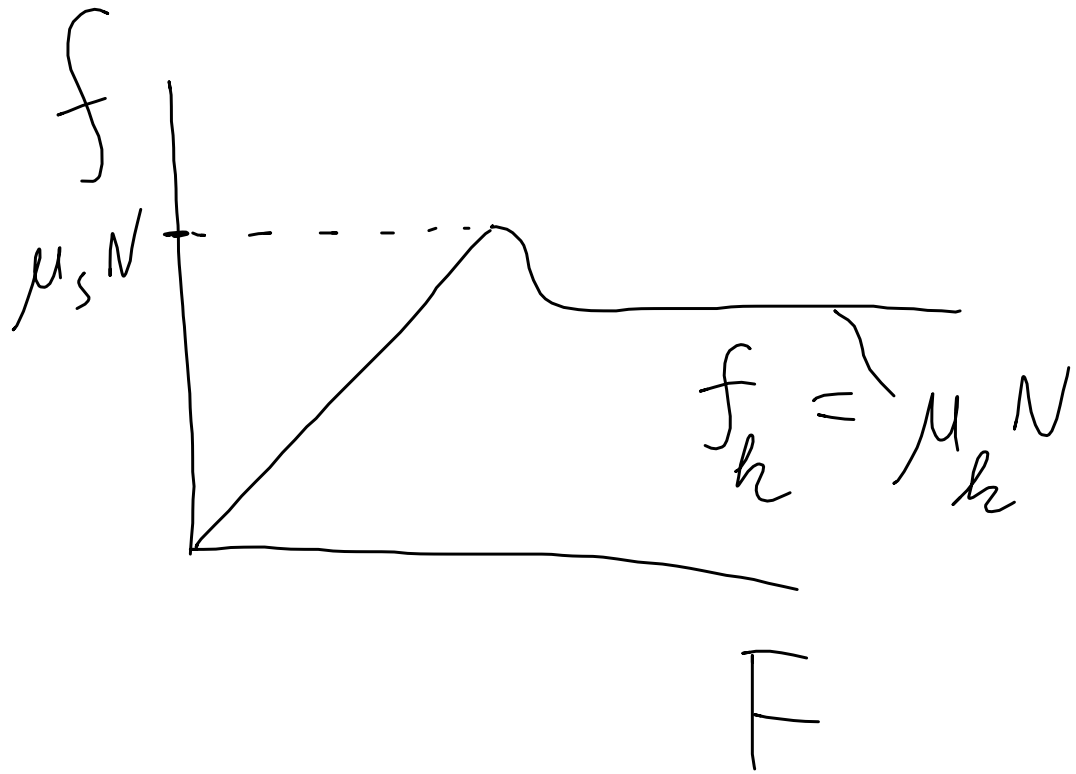
$$+\uparrow \sum F_y = A_y - 60 + 13.\bar{3} = 0 \quad A_y = 46.\bar{6} \text{ lbs}$$



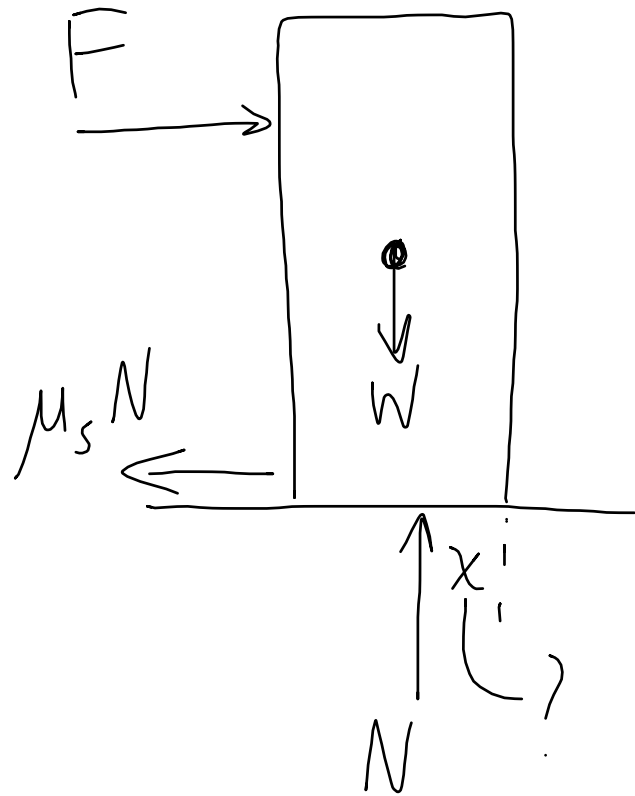


# Ch 8 Friction

$$f_s \leq \mu_s N$$



① Slips (or just about to slip)



② about to tip

